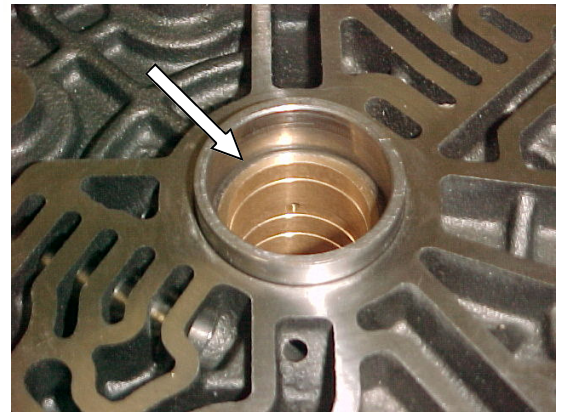


Align large hole with
curved passageway as
shown.

Check alignment with
passages inside.



The stock bushing requires a lot of pressure to extract it. Make sure your press has good support under this Center Support or you may crack it.

The bushing must be installed as shown. The chamfer on the lower edge of the bushing will help start in. Press all the way down to the ledge.

Installed inside dimension should be .0015 to .0020 clearance.

Omega Machine & Tool, Inc.
"Precision and Innovation for Today"

Tel. 800 601 7722 – Fax 916 928 6020
www.omegamachine.com